

Seminar Information

Registration deadline: June 22, 2012

- Call 630-595-7023 after June 22 for space availability.
- Seminar will be held at Comfort Inn Suites. Lodging is available at a special group rate of \$74.99/night plus tax. Make reservations by June 8. Check-in time is 3 p.m.
- Snacks will be provided. Complimentary breakfast for Comfort Inn guests. Dinner on Friday and Saturday are on your own. Lunch for both days is included in the registration fee.
- Registration begins on Friday, June 29 at 8:30 a.m. The seminar on Friday and Saturday runs from 9 a.m. and ends 5 p.m.
- You do NOT need to purchase a Leader's Guide in order to attend this seminar.
- A bookstore will be available to purchase resources.
- American Taxi gives a special rate (this is not a free shuttle service) from O'Hare Airport to those staying at the Comfort Inn Suites. Call 877-755-2227 to schedule arrival and departure times.



Paula Silva

Paula Silva, MA, is co-founder and president of FOCUS Ministries, Inc. She provides consulting services to churches regarding domestic violence and is a church advocate for victims.

She has coauthored the book, *Violence Among Us: Ministry to Families in Crisis* and the article, *Domestic Violence Among Believers*, in the 2005 Vol. 13 No. 3 issue of *Christian Counseling Today Magazine*.

She has been a guest on *Midday Connection* and *This is the Day* (Moody Broadcasting Network), the *Scott Thomas Show* (WYLL radio in Chicago), *Time for Hope*, and the *Harvest Show*.

Silva has spoken at churches, crisis pregnancy centers, MOPS, Bible studies and small groups. She has presented *Behind Closed Doors*, *What Color is Your Elephant* at seminars and *Ten Keys to Counseling Victims of Domestic Violence* workshops at the AACC World Conference in 2005. She has also trained churches and organizations about domestic violence.



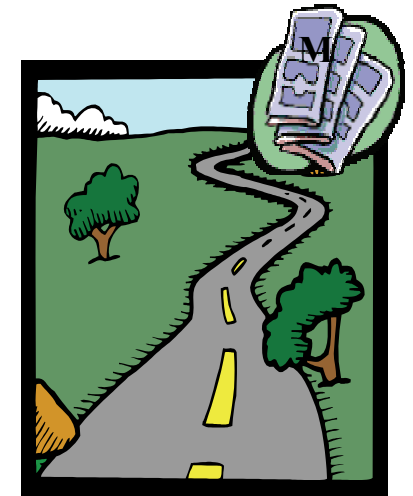
Mail registration to:

FOCUS Ministries, Inc.
P.O. Box 2014
Elmhurst, IL 60126

630-595-7023

contactus@focusministries1.org
www.focusministries1.org

Partners In The Journey



Certificate Training for Facilitators of Faith Based Domestic Violence and Abuse Support Groups

CEU'S Available

June 29-30, 2012

Comfort Inn Suites
17 W 445 Roosevelt Rd.
Oakbrook Terrace, IL 60181

FOCUS Support Group Leaders Training Weekend

FOCUS Ministries offers a certificate program for support group leaders in our Partners in the Journey Seminars. The training includes an extensive training manual that covers all the aspects of starting a support group, the dynamics of support groups, domestic violence training, how to help a victim, and information on how to provide spiritual direction for victims of abuse.

Our training goes beyond the seminars. Our FOCUS support group leaders become part of a Christian community of leaders worldwide and a member of an established organization that has proven itself since 1995.

FOCUS Ministries is dedicated to serving our leaders by:

- ◆ Making them aware of pertinent resources, conferences, and seminars
- ◆ Providing free or discounted resources
- ◆ Providing a platform of communication with other leaders worldwide
- ◆ Offering confidential one-on-one leader consultation regarding areas of concern and problematic issues
- ◆ Ongoing training through our webinars
- ◆ Providing encouragement, support, and spiritual direction
- ◆ Providing prayer support
- ◆ Providing our FOCUS Newsletters for the support group
- ◆ Providing advertisement of support groups on our website

Learn how to journey with someone who experiences the pain of abusive relationships.

Seminar begins at 9 a.m. on Friday, June 29, and ends at 5 p.m. on Saturday, June 30. Registration is at 8:30 a.m. on Friday.

Session 1: Starting the Journey

- **Which way do I go?** (*How to start a support group; advertising; structure of a support group*)
- **Reading the road map** (*Dynamics of the support group; team approach; curriculum; resources*)
- **Barriers in the journey** (*Identifying and handling conflict and difficult people*)

Session 2: What's in the Knapsack?

- **What's dysfunctional about relationships?** (*Dynamics of domestic violence; effects of DV on children; why does she stay?; teen dating violence; why does he do that?*)
- **How can I help?** (*Being an anchor in their life storms, setting boundaries with members of the group, self-care*)

Session 3: Spiritual Direction on the Journey

- **Companions on the journey** (*Leading members of the group on a path toward understanding and healing, understanding their faith issues*)
- **Journeying to know God** (*Sharing our personal journey with God, discovering their concept of God which influences their journey*)

Make your own lodging reservations at :
 Comfort Inn Suites 630-916-1000
 17 W 445 Roosevelt Rd.
 Oakbrook Terrace, IL 60181
 www.comfortinn.com

Special rate if you book by June 8, 2012:
 \$74.99/night + tax for double occupancy
 (1-2 people) Complimentary breakfast
Mention FOCUS Ministries to get special rate.

Training Registration

- Registration by June 22, 2012** \$180.00
includes training manual, snacks, and lunch for both days. Call 630-595-7023 after June 22 for space availability. Note: Each person is responsible for making their own hotel reservations!
- Support Group Leader's Guide *** \$ 40.00
- 14 CEU's for Counselors**
 License Number: _____ \$ 35.00
- 14 CEU's for Social Workers**
 License Number: _____ \$ 35.00

TOTAL _____

Checks or Money Orders should be made payable to FOCUS Ministries, P.O. Box 2014, Elmhurst, IL. Credit card payment can only be made online at www.focusministries1.org.

** Note: The Support Group Leader's Guide is not the same as the training manual.*

Name: _____

Address: _____

Phone: _____

Email: _____