

## Seminar Information

Registration deadline: June 10, 2011

- Call 630-595-7023 after June 10 for space availability.
- Seminar will be held at Comfort Inn Suites. Lodging is available at a special group rate of \$69.99/night plus tax. Make reservations before June 10. Check-in time is 3 p.m.
- Snacks will be provided. Complimentary breakfast for Comfort Inn guests. Dinner on Friday and Saturday are on your own. Lunch for both days is included in the registration fee.
- Registration begins on Friday, June 24 at 8:30 a.m. The seminar on Friday and Saturday runs from 9 a.m. and ends 5 p.m.
- You do NOT need to purchase a Leader's Guide in order to attend this seminar.
- A bookstore will be available to purchase resources.
- American Taxi gives a special rate (this is not a free shuttle service) from O'Hare Airport to those staying at the Comfort Inn Suites. Call 877-755-2227 to schedule arrival and departure times.



*Paula Silva*

Paula Silva is co-founder and president of FOCUS Ministries, Inc. and the director of FOCUS Women's Center in Wood Dale, IL.

She has coauthored the book, *Violence Among Us: Ministry to Families in Crisis* and the article, *Domestic Violence Among Believers*, in the 2005 Vol. 13 No. 3 issue of *Christian Counseling Today Magazine*.

She has been a guest on *This is the Day, Midday Connection* (Moody Broadcasting Network), the *Scott Thomas Show* (WYLL radio in Chicago), *Time for Hope*, and the *Harvest Show*.

Silva has spoken at churches, crisis pregnancy centers, MOPS, Bible studies and small groups. She has presented *Behind Closed Doors, What Color is Your Elephant* at seminars and *Ten Keys to Counseling Victims of Domestic Violence* workshops at the AACC World Conference in 2005. She has also trained churches and organizations about domestic violence.



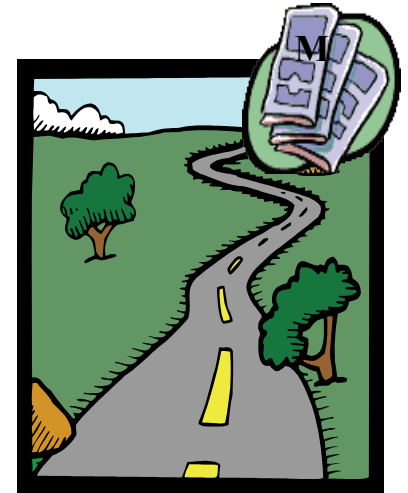
Mail registration to:

FOCUS Ministries, Inc.  
P.O. Box 2014  
Elmhurst, IL 60126

630-595-7023  
contactus@focusministries1.org  
www.focusministries1.org

TRAIN THE TRAINER

## Partners In the Journey



*Training for  
FOCUS Support  
Group Leaders*

**June 24-25, 2011**

Comfort Inn Suites  
17 W 445 Roosevelt Rd.  
Oak Brook Terrace, IL 60181

*FOCUS*  
*Support Group Leaders*  
*Training Weekend*

FOCUS Ministries offers a certificate program for support group leaders in our Train the Trainer Seminars. The training includes an extensive training manual that covers all the aspects of starting a support group, the dynamics of support groups, domestic violence training, how to help a victim, and information on how to provide spiritual direction for victims of abuse.

Our training goes beyond the seminars. Under the direction of our National Support Group Coordinator, our FOCUS support group leaders become part of a Christian community of leaders worldwide and a member of an established organization that has proven itself since 1995.

FOCUS Ministries is dedicated to serving our leaders by:

- ◆ Making them aware of pertinent resources, conferences, and seminars
- ◆ Providing free or discounted resources
- ◆ Providing a platform of communication with other leaders worldwide
- ◆ Offering confidential one-on-one leader consultation regarding areas of concern and problematic issues
- ◆ Ongoing training through our webinars
- ◆ Support group leaders retreats
- ◆ Providing encouragement, support, and spiritual direction
- ◆ Providing prayer support
- ◆ Providing our FOCUS Newsletters for the support group
- ◆ Providing advertisement of support groups on our website and in our FOCUS Newsletter

*As you travel life's journey, hurting women will come across your path. Discover in this seminar what you can do to help.*

Seminar begins at 9 a.m. on Friday, 24, and ends at 5 p.m. on Saturday, June 25. Registration is at 8:30 a.m. on Friday.

*Session 1: Starting the Journey*

- **Which way do I go?** (*How to start a support group; advertising; structure of a support group*)
- **Reading the road map** (*Dynamics of the support group; team approach; curriculum; resources*)
- **Barriers in the journey** (*Identifying and handling conflict and difficult people*)

*Session 2: What's in the Knapsack?*

- **What's dysfunctional about relationships?** (*Dynamics of domestic violence; effects of DV on children; why does she stay?; teen dating violence; why does he do that?*)
- **How can I help?** (*Being an anchor in their life storms, setting boundaries with members of the group, self-care*)

*Session 3: Spiritual Direction on the Journey*

- **Companions on the journey** (*Reaching hearts/ touching souls; choosing companions wisely*)
- **Journeying to know God** (*looking at your personal journey and walking the journey with hurting women*)

**Conference Registration**

**Registration by June 10, 2011** \$160.00  
*includes training manual, snacks, and lunch for both days. Note: Each person is responsible for making their own hotel reservations! Call 630-595-7023 after June 10 for space availability.*

Support Group Leader's Guide \* \$ 40.00

Total: \_\_\_\_\_

**Checks or Money Orders should be made payable to FOCUS Ministries. Credit card payment can only be made online at [www.focusministries1.org](http://www.focusministries1.org).**

*\* The Support Group Leader's Guide is only available for purchase by Train the Trainer attendees. This resource provides specific topics to lead a FOCUS support group. The manual may also be purchased at the seminar. Note: The Support Group Leader's Guide is not the same as the training manual.*

Name \_\_\_\_\_

Address \_\_\_\_\_  
\_\_\_\_\_  
\_\_\_\_\_

Phone \_\_\_\_\_

Email \_\_\_\_\_  
\_\_\_\_\_

**Accommodations**

Comfort Inn Suites 630-916-1000  
17 W 445 Roosevelt Rd.  
Oakbrook Terrace, IL 60181  
[www.comfortinn.com](http://www.comfortinn.com)

**Special rate if you book before June 10, 2011:**  
\$69.99/night + tax for double occupancy  
(1-2 people) Complimentary breakfast  
**Mention FOCUS Ministries to get special rate.**