

## Seminar Information

### Annual Seminars hosted by FOCUS

- Seminars are held in local hotels in the western suburbs of Chicago.
- Seminars begin on Friday morning and end on Saturday evening.
- Participants receive a training manual (included in cost of seminar), and have opportunity to purchase the Support Group Leaders Guide and additional resources (books, manuals, etc.).
- Registration fee includes training manual and lunch for both days. Participants are responsible for their own lodging and other food costs.

### Hosting Seminars in Your Area

- Seminar can be held at your local church or conference center.
- Seminar can be scheduled to begin on Friday morning and end on Saturday evening.
- A minimum of 15-20 people are needed for each seminar.
- Each person attending the Train the Trainer will be charged a registration fee. The host of the seminar will provide traveling expenses, food, and lodging for FOCUS staff.

## Workshop Leaders



### *Paula Silva*

---

Paula Silva is co-founder and president of FOCUS Ministries, Inc. and the director of FOCUS Women's Center in Wood Dale, Illinois.

She has coauthored the book, *Violence Among Us: Ministry to Families in Crisis* and the article, *Domestic Violence Among Believers*, in the 2005 Vol. 13 No. 3 issue of *Christian Counseling Today Magazine*.

She has been a guest on *Midday Connection* (Moody Broadcasting Network), the *Scott Thomas Show* (WYLL radio in Chicago), *Time for Hope*, and the *Harvest Show*.

Paula has spoken to churches, crisis pregnancy centers, MOPS, Bible studies and small groups. She has presented *Behind Closed Doors*, *What Color is Your Elephant* at seminars and *Ten Keys to Counseling Victims of Domestic Violence* workshops at the AACC World Conference in 2005. She has also trained churches and organizations about domestic violence.



### *Brenda Spivey*

---

Brenda Spivey is the National Support Group Coordinator for FOCUS Ministries. Brenda received a B.A. in Communication and Women's Issues from the School for New Learning at DePaul University, Chicago, IL. An advocate and speaker on the subject of domestic violence awareness/prevention, she works with lawmakers, healthcare professionals, educators, and the faith community to initiate a more effective response to domestic abuse. For FOCUS Ministries, Inc., Brenda also facilitates a monthly support group for women in the Fox Valley area.

### **FOCUS Ministries, Inc.**

---

P. O. Box 2014  
Elmhurst, IL 60126  
Phone: 630-595-7023  
[www.focusministries1.org](http://www.focusministries1.org)

TRAIN THE TRAINER

### Seminar for FOCUS Support Group Leaders



**FOCUS Ministries, Inc.**



**FOCUS**  
**Support Group Leaders**  
**Training Weekend**

You are invited to attend a weekend training seminar for women who are:

- Interested in starting a FOCUS Support Group
- Currently leading a Bible study or support group for women
- Interested in helping other women deal with domestic violence, spousal abuse, or divorce.
- Interested in a forum for current support group leaders

*As you travel life's journey, you will encounter hurting women. Discover in this seminar what you can do to help.*

### **Session 1: Starting the Journey**

- **Which way do I go?** (*How to start a support group; advertising; structure of a support group*)
- **Reading the road map** (*Dynamics of the support group; team approach; curriculum; resources*)
- **Barriers in the journey** (*Identifying and handling conflict and difficult people*)

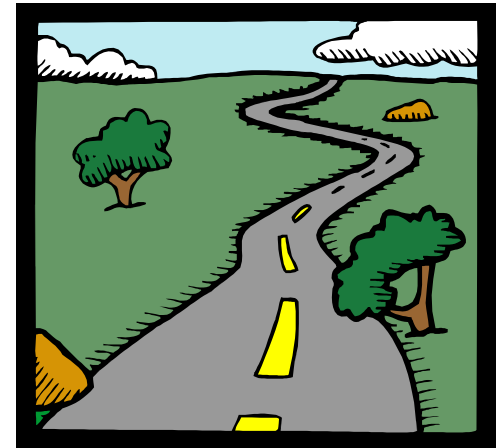
### **Session 2: What's in the Knapsack?**

- **What's dysfunctional about relationships?** (*Dynamics of domestic violence; effects of DV on children; why does she stay?; teen dating violence; why does he do that?*)
- **How can I help?** (*Being an anchor in their life storms, setting boundaries with members of the group, self-care*)

### **Session 3: Spiritual Direction on the Journey**

- **Companions on the journey** (*Reaching hearts/ touching souls; choosing companions wisely*)
- **Journeying to know God** (*Looking at your personal journey and walking the journey with hurting women*)

## **Partners In The Journey**



**“Imagine what it would be like to stir up another person’s appetite for God until it became stronger than his or her appetite for answers, for control, and for every lesser blessing in life.”**

—Larry Crabb, *Soultalk*

### **Upcoming Seminars:**

- Check our website ([focusministries1.org](http://focusministries1.org)) for a listing of upcoming seminars and registration fees.
- Contact us if you would like to host a seminar at your church or in your area.

*“These women are called, prepared, and surrendered to their crucial ministry. The stamp of God is on their lives and work. It’s my prayer that God will use their gifts across the world to draw thousands of women to the hope that Christ provides. This is one ministry I’m sold on.”*

*Dr. Larry Crabb, New Way Ministries*